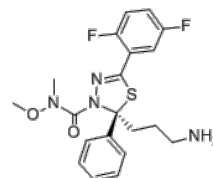


**Product Name** : Filanesib  
**Cat. No.** : PC-73188  
**CAS No.** : 885060-09-3  
**Molecular Formula** : C<sub>20</sub>H<sub>22</sub>F<sub>2</sub>N<sub>4</sub>O<sub>2</sub>S  
**Molecular Weight** : 420.48  
**Target** : Kinesin  
**Solubility** : 10 mM in DMSO



### Biological Activity

Filanesib (ARRY-520) is a potent, selective and noncompetitive **kinesin spindle protein (KSP)** inhibitor with IC<sub>50</sub> of 6 nM. Filanesib (ARRY-520) induces mitotic arrest in multiple cell lines.

Filanesib (ARRY-520) exhibits anti-proliferative against a broad range of human and rodent tumor cell lines, including a variety of leukemias and solid tumors, with EC<sub>50</sub> of 0.4-14.4 nM.

Filanesib (ARRY-520) causes accumulation of cells in the G2/M phase of the cell cycle in a dose-dependent manner in HeLa cells, induces caspase-2 activation.

Filanesib (ARRY-520) demonstrates anti-tumor activity in vivo.

### References

Christine Lemieux, et al. AACR Annual Meeting. 2007.

Woessner R, et al. **Anticancer Res.** 2009 Nov;29(11):4373-80.

Carter BZ, et al. **Leukemia.** 2009 Oct;23(10):1755-62.

**Caution: Product has not been fully validated for medical applications. Lab Use Only!**

E-mail: tech@probechem.com